

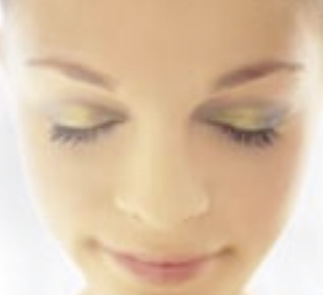


EP3222KU/CU Real Pro Elite™ Massage Lounger

- **Body Scan Technology** for personalized contoured massage
- **33 Airbags for Total Body Massage** – Hips, seat, calves, shins and feet
- **Float Massage Mechanism** for smooth wrist movements
- **Variable Speed & Intensity Control** for ultimate massage precision
- **188 Square Inches of Massage Coverage**
- **3-Person Memory** – Memorizes up to 18 programs
- **5 Distinct Pre-programs** and 1 self-program option
- **Ottoman** delivers professional, contoured foot and calf massage
- Easy-to-use Remote with Voice Guide
- High-quality Synthetic Leather



Panasonic ideas for life



A Superior Total Body Massage that's Precise, Realistic & Smooth.

The Panasonic Real Pro Elite™, with its advanced motor, extended memory and sensor technology is the quintessential massage lounge.



Panasonic is the first company to be endorsed by the ACA for massage chairs.

188 SQUARE INCHES OF MASSAGE COVERAGE Massage covers the largest area of the neck, shoulders, back and lower back than any other massage lounge in its class.

18-MEMORY CAPABILITY & 6 DISTINCT PROGRAMS

6 programs (Four 14-minute Pre-Programs, One 5-minute Quick Program & One 14-minute Self Program) can be personalized and saved for three people.



AIR SYSTEM Allows for a complete, personalized lower body massage:

Calves – kneading and loosening of the shins and calf muscles

Thighs – applies pressure to the muscles in the thighs, which relieves tightness and tension while increasing blood circulation

Feet – upward pressure is applied for the ultimate relief

Hips/Seat – soothing squeezing for relaxation of muscles and increased circulation

FLOAT MESSAGE MECHANISM Simulates the rotating movements of a wrist for a more life-like massage. This outstanding feature lets the Panasonic Real Pro Elite perform various massage actions.

PROFESSIONAL FOOT AND CALF MASSAGE Complete foot and calf massage includes soles of feet, front of calves and calf muscles – increases circulation and reduces swelling.

STRETCHING The ottoman stretches the leg, knee and hip gently to help relieve tension from stiff muscles.



REMOTE Easy-to-use remote allows for complete personalized massage at the touch of a button. The helpful voice guide takes you through your massage experience, every step of the way.

REALISTIC MESSAGE THERAPIST TECHNIQUES

Using 2 or 4 firm rubber massage heads, the Panasonic Real Pro Elite accurately simulates stroking with the palm of hand, pressing with the heel of the hand, kneading with thumbs and pressure with thumbs.



| EP3222 Specifications | | Lower Body Massage | |
|-----------------------|----------------------------------|----------------------------|--|
| Power Supply | AC 120V 60Hz | Foot/Sole | Yes – 6 air bags |
| Power Consumption | 210W | Shin (calf front) | Yes – 16 air bags |
| Basic Massage Modes | Rolling | Massage Strength | 3 Strengths |
| | 2 Kneading | Ottoman Length Adjustment | Max. 9 inches |
| | 2 Tapping | Seat/Thigh Massage | Yes – 3 air bags |
| | 2 Shiatsu | Hip Massage | Yes – 8 air bags |
| | 2 Swedish | Other Features | |
| 2 Compression | Arm Air Massage | N/A | |
| # of Basic Massages | 11 | Leg Stretch | Yes |
| Pre-Program | Shiatsu | Upholstery | Synthetic Leather Black (EP3222KU) Warm Gray (EP3222CU) |
| | Deep | Power Reclining | Yes |
| | Swedish | Ottoman Up/Down | Yes |
| | Stretch | Electronic Body Scanning | Yes |
| Quick | Height Adjustment | Yes | |
| Self Program | Yes | Dimensions | |
| User Program | Yes | Upright (HxWxD) | 45.3 x 33.1 x 50.8 |
| Total Massages | 160 | Reclined (HxWxD) | 22.4 x 33.1 x 77.6 |
| Massage Stroke | 30 inches | Weight of Unit | 170.0 lbs. |
| Float Mechanism | Yes | Weight in Box | 209.7 lbs. |
| Massage Width | 2 – 8.3 inches (w/ lateral move) | Maximum User Weight | 264 lbs. |
| Intensity Adjustment | 4 inches | Minimum Distance from Wall | 16 inches |
| Total Massage Area | 188 sq. inches | | |

BENEFITS OF PANASONIC CHAIR MASSAGE

- ✓ Relaxes muscles
- ✓ Stimulates acupoints for increased energy flow
- ✓ Temporarily increases circulation
- ✓ Reduces swelling of legs with air massage

11 BASIC MESSAGE MODES

Swedish – gentle pressure using 4 rollers to simulate the palms of hands

Knead – firm kneading especially effective on neck and shoulders

Compression – firmer rubbing motion across the back

Tapping – invigorating sensation of hands rapidly tapping on back muscles

Shiatsu – strong deep-tissue pressure and stretching using 2 massage heads

Rolling – muscles are gently stretched as massage heads move up and down along the back



Limited Warranty – 3 years parts and 1 year labor. Extended service plan is available from Panasonic Services Company at 1-800-637-2007 or 1-800-973-7935 (Florida only). UL Approved.

Panasonic ideas for life

Panasonic Consumer Electronics Company
Division of Panasonic Corporation of North America

Executive Offices: One Panasonic Way,
 Secaucus, NJ 07094(201) 348-7000
www.panasonic.com/massage

Panasonic Customer Service

9 am - 9 pm (EST) M-F
 10 am - 7 pm (EST) Sat. and Sun.
 1-800-211-PANA
www.panasonic.com/support

Panasonic Canada Inc.

5770 Ambler Drive, 52
 Mississauga, ON L4W2T3